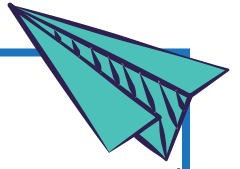


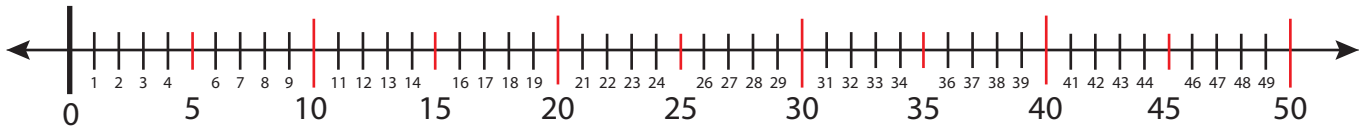
Name :

Date :

## Solving Addition Facts to 20 Using Number Line



Solve the addition facts to 20 and justify your answers using number line.



1.  $19 + 0 = \square$

9.  $2 + 8 = \square$

2.  $17 + 1 = \square$

10.  $6 + 9 = \square$

3.  $18 + 2 = \square$

11.  $7 + 10 = \square$

4.  $15 + 3 = \square$

12.  $5 + 11 = \square$

5.  $16 + 4 = \square$

13.  $8 + 12 = \square$

6.  $13 + 5 = \square$

14.  $1 + 13 = \square$

7.  $6 + 6 = \square$

15.  $3 + 14 = \square$

8.  $7 + 7 = \square$

16.  $4 + 15 = \square$

