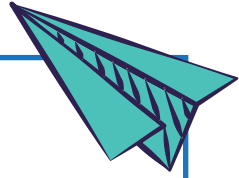


Name :

Date :

Cut and Paste Activity to Add Near Doubles



Cut and paste the correct answer to solve the near doubles additions.

$5 + 6 = \square$

$31 + 32 = \square$

$37 + 38 = \square$

$7 + 8 = \square$

$10 + 11 = \square$

$39 + 40 = \square$

$8 + 9 = \square$

$33 + 34 = \square$

$35 + 36 = \square$

$9 + 10 = \square$

✂ | 71 | 79 | 75 | 17 | 63 | 21 | 67 |
| 15 | 11 | 19 |

