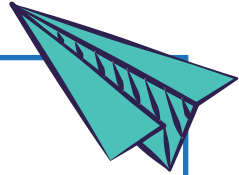


Name :

Date :

Using Near Doubles Addition to Solve Given Numbers



Divide the given numbers to their near doubles values.

$$15 = 7 + 8$$

$$17 = \square + \square$$

$$9 = \square + \square$$

$$11 = \square + \square$$

$$7 = \square + \square$$

$$13 = \square + \square$$

$$3 = \square + \square$$

