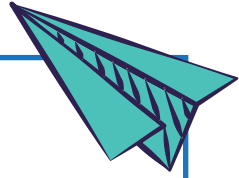


Name :

Date :

Using Near Doubles Addition to Solve Given Numbers



Divide the given numbers to their near doubles values.

$$31 = \square + \square$$

$$37 = \square + \square$$

$$41 = \square + \square$$

$$33 = \square + \square$$

$$43 = \square + \square$$

$$39 = \square + \square$$

$$35 = \square + \square$$

