

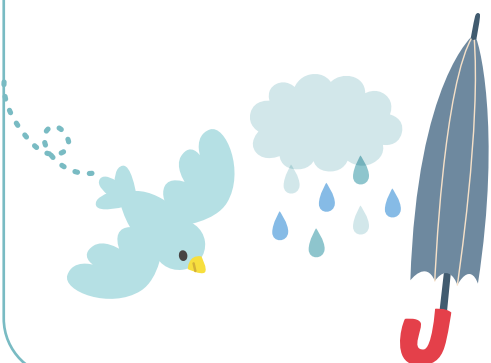
Date:

Name:

Guess the Numbers with A Hundred Chart



1	2	3	4	5	6	7	8	9	10
11	12	13	14	15	16	17	18	19	20
21	22	23	24	25	26	27	28	29	30
31	32	33	34	35	36	37	38	39	40
41	42	43	44	45	46	47	48	49	50
51	52	53	54	55	56	57	58	59	60
61	62	63	64	65	66	67	68	69	70
71	72	73	74	75	76	77	78	79	80
81	82	83	84	85	86	87	88	89	90
91	92	93	94	95	96	97	98	99	100



Date:

Name:

Guess the Numbers with A Hundred Chart

Solve the riddles with following number chart.



Riddle 1:

I'm an odd number,
But not a prime, you see.
Between 30 and 50,
Which number could I be?

Answer:

Riddle 2:

I'm less than 20,
But greater than 10, it's true.
An even number I am,
Which one? Can you construe?

Answer:

Riddle 3:

Between 40 and 60,
I am located with glee.
An odd number, I must say,
Guess me now, without delay.

Answer:

Riddle 4:

I'm a multiple of 10,
But not a multiple of 5.
Between 30 and 50, I thrive,
Which number keeps me alive?

Answer:

Riddle 5:

I'm greater than 60,
But less than 80 too.
An odd number, you'll find,
Which one am I, do remind?

Answer:

Riddle 6:

Between 80 and 100,
I'm an even number so fine.
But not a multiple of 10,
Which number am I, divine?

Answer:

